

Measuring the Function of Your Liver

Research partially supported by a grant from the
PSC Partners Seeking a Cure Foundation

Steve Helmke, PhD

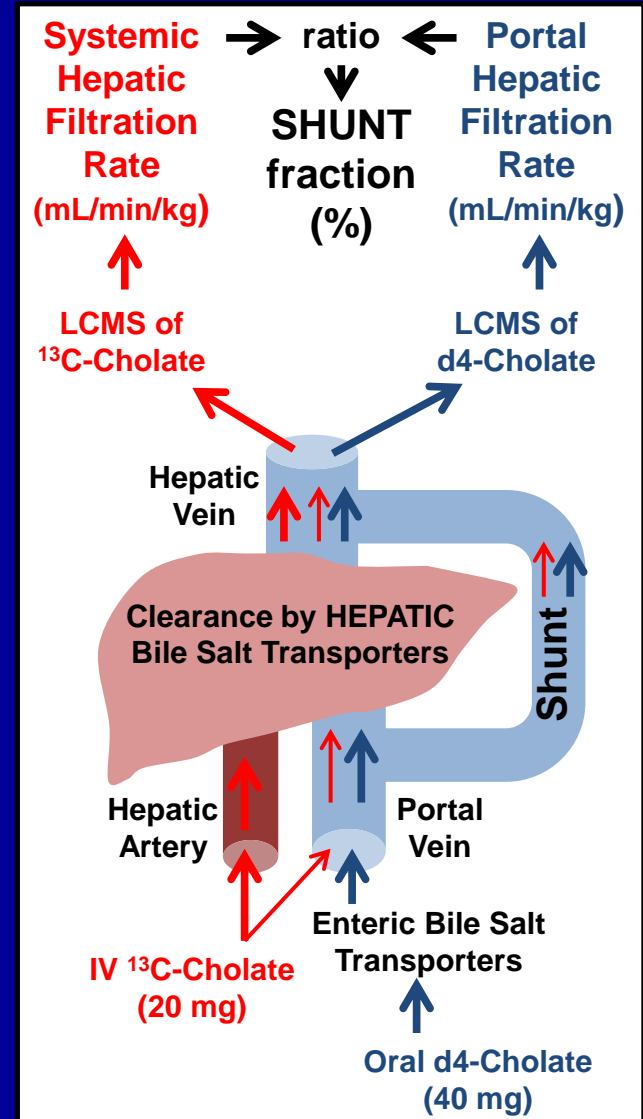
Research Instructor

Division of Gastroenterology and Hepatology
University of Colorado School of Medicine

A New Type of Liver Function Test that is Safe, Convenient, and Accurate

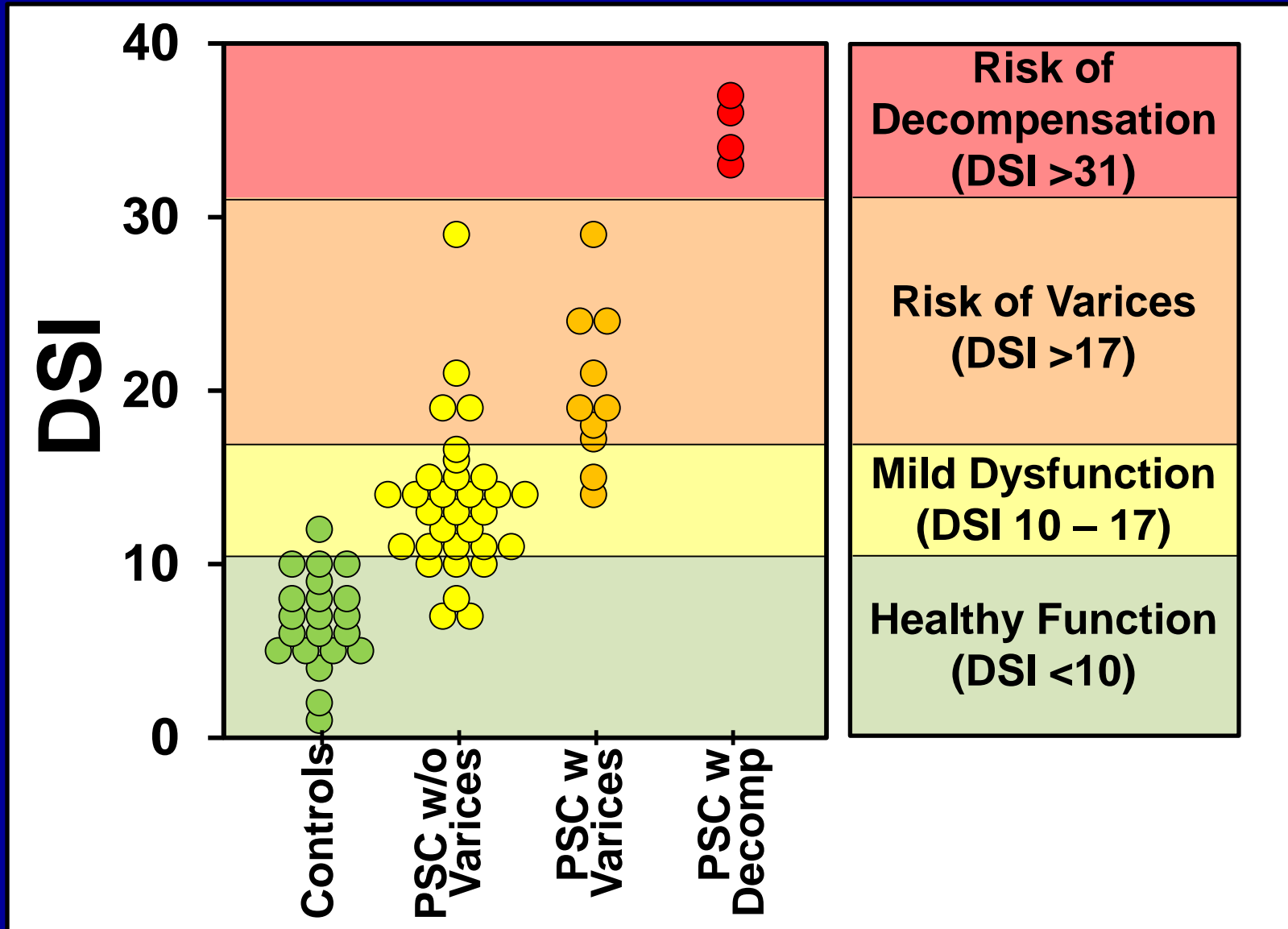
Testing Procedure

1. Nurse places an IV catheter in the patient's arm and takes a small blood sample (1 tsp).
2. Nurse gives a small dose of ^{13}C -cholate (20 mg) through the catheter.
3. At the same time, the patient drinks a cup of juice with a small dose of d4-cholate (40 mg). ^{13}C -cholate and d4-cholate are safe and are NOT radioactive.
4. Nurse draws small blood samples (1 tsp) from the catheter at 5 min., 20 min., 45 min., 60 min., and 90 min.
5. Nurse removes catheter and patient can immediately resume normal activities.
6. Blood samples are analyzed to measure a Disease Severity Index (DSI).



Liver Function Testing

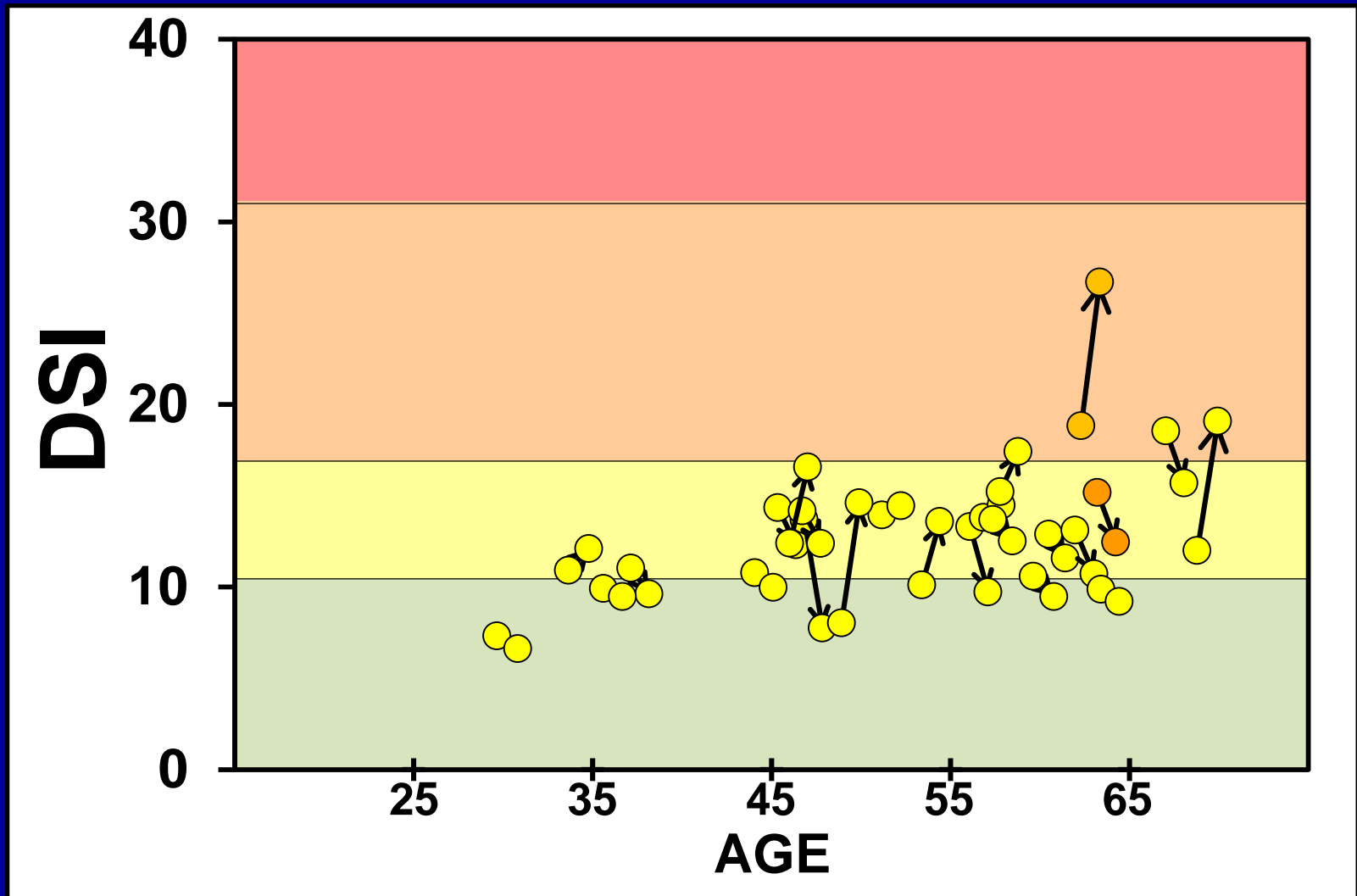
Helps Predict Risk of Complications



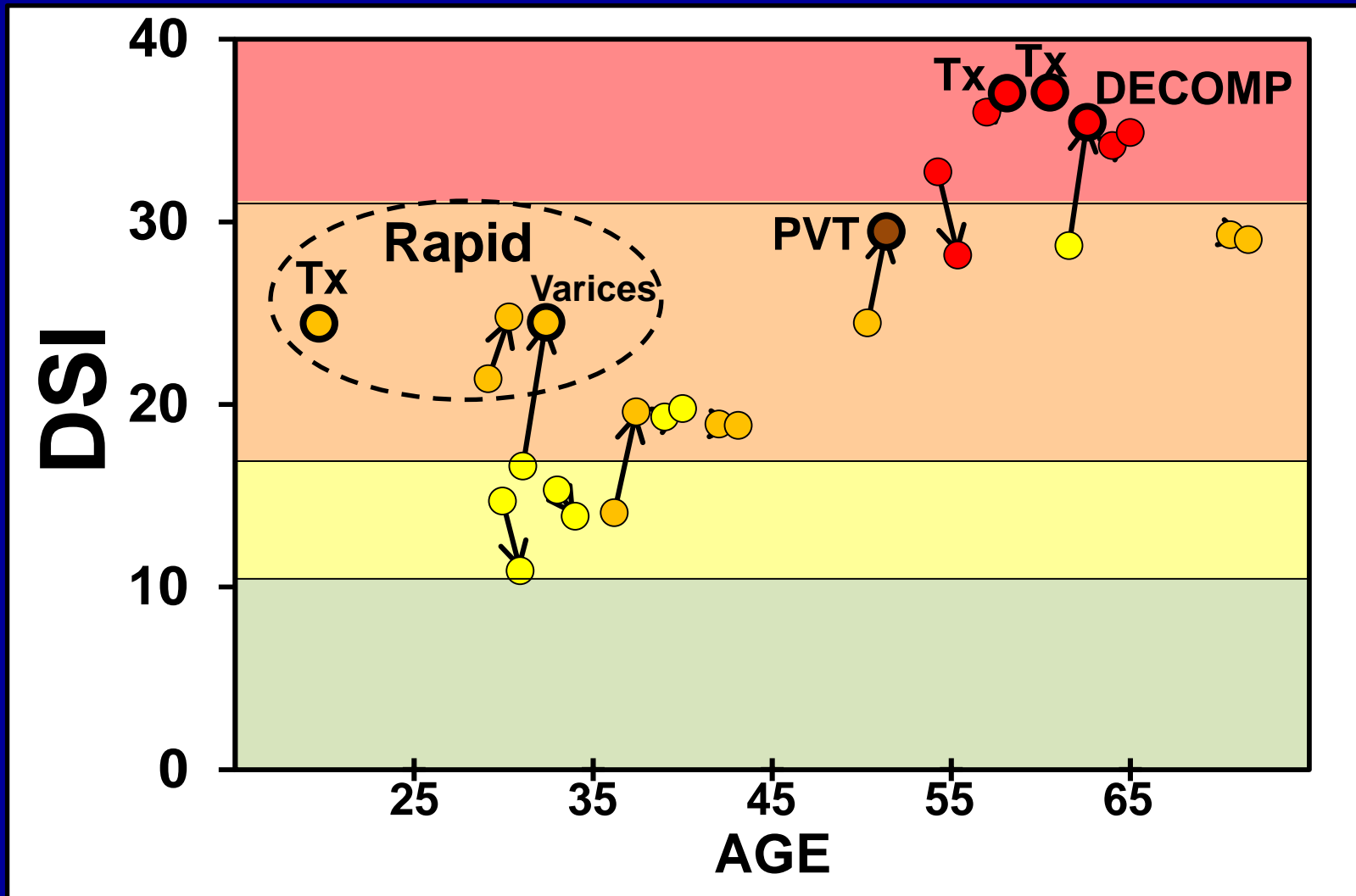
Liver Function Testing Helps Predict Risk of Complications

- **A DSI > 17 indicates you may be at risk for swollen veins that shunt blood around the liver (varices)**
- **A DSI > 31 indicates you may be at risk for a more serious stage of liver disease (decompensation)**

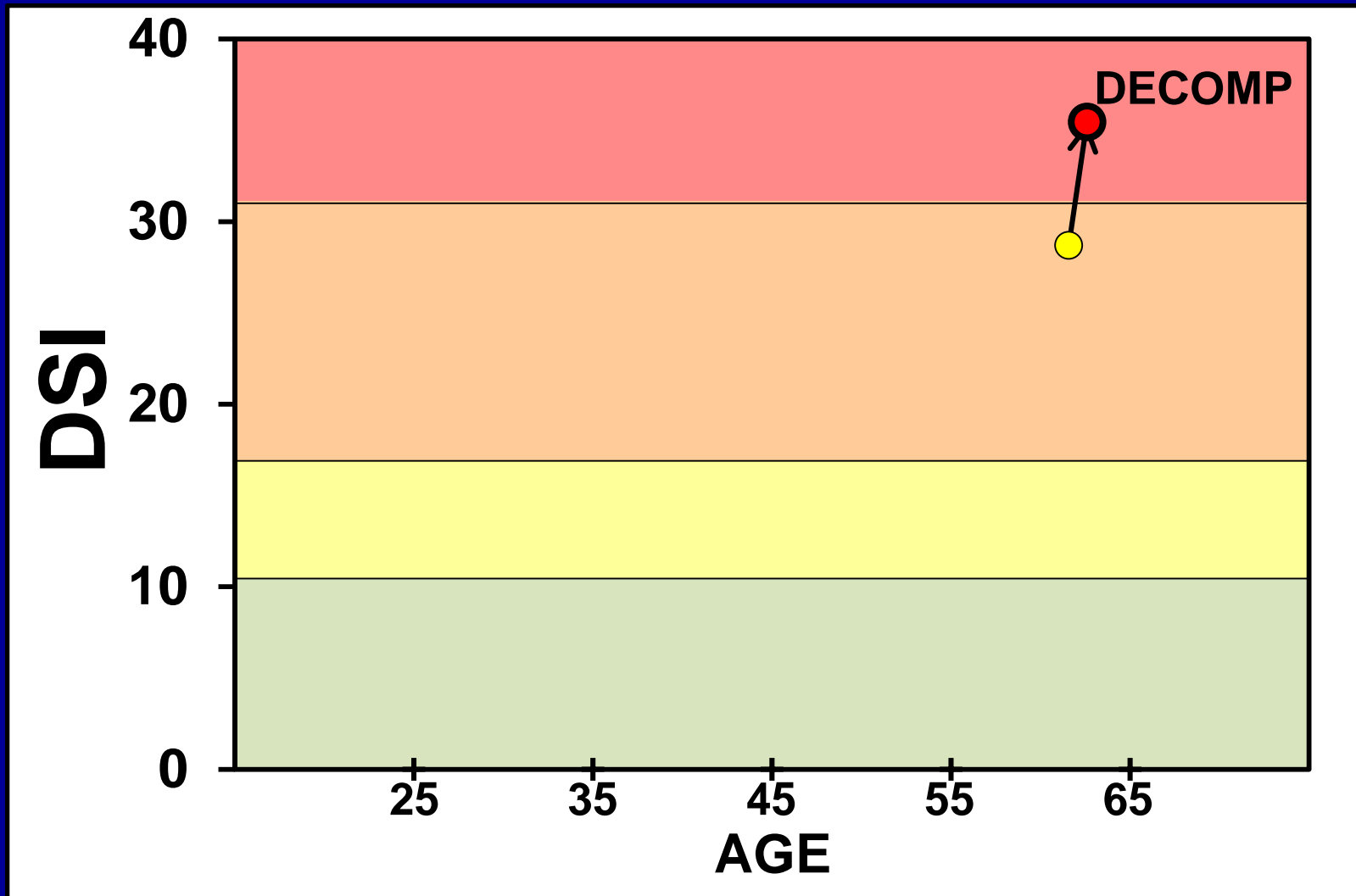
Slow Progression of PSC



Moderate and Rapid Progression of PSC



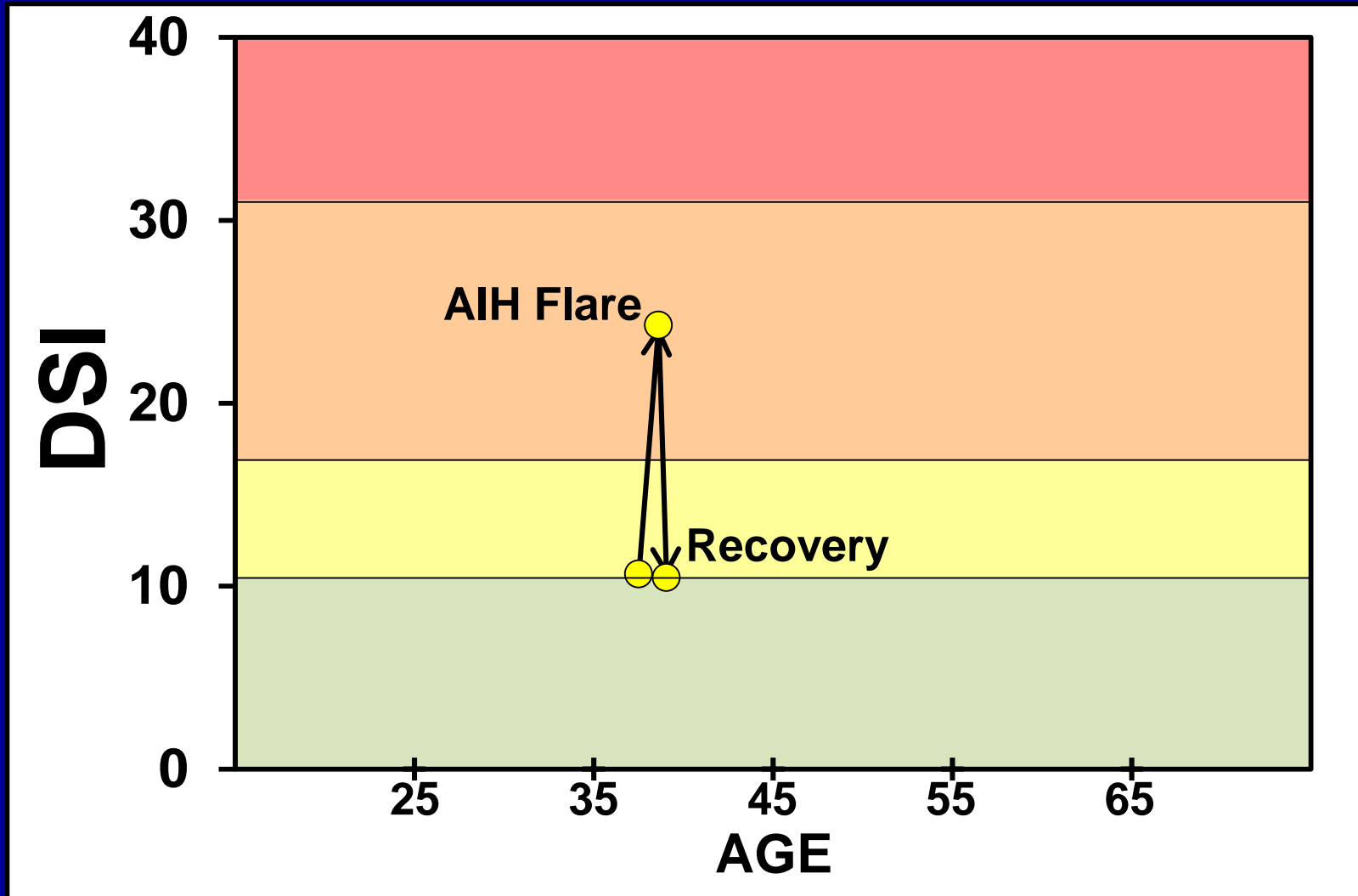
Monitoring a Patient with a High Risk for Decompensation



Liver Function Testing can Measure the Progression of PSC

- **Patients progress at different rates.**
- **Most patients progress slowly over many years and have only mild dysfunction.**
- **Some patients progress at a moderate rate and have serious complications late in life.**
- **A few patients progress rapidly and have complications in early adulthood.**

Monitoring a Patient with an AIH Flare and their Recovery after Therapy



Summary

- **Liver Function Testing can predict your risk for complications.**
- **Liver Function Testing can follow the progression of your disease.**
- **Liver function Testing can also measure improvements after therapy and could be used to evaluate new treatments for PSC.**